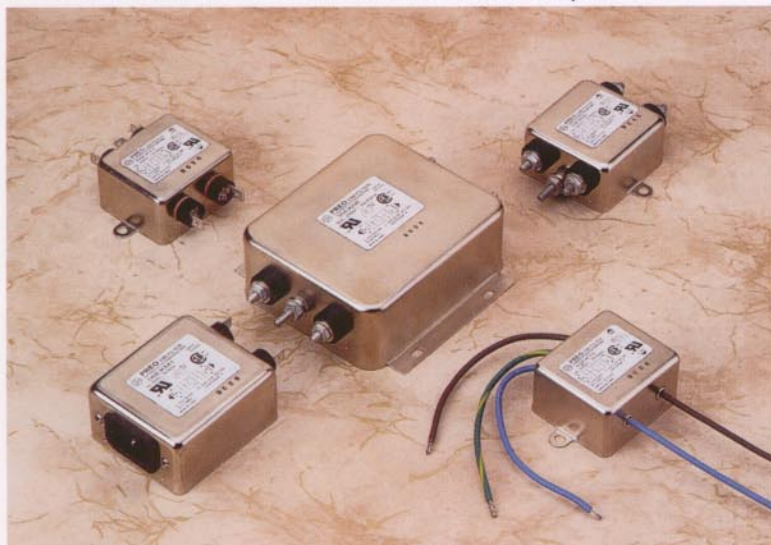


PREO Power Line EMI Filters

A Division of Eastek International Corporation

Series EK

General Purpose
CM & Enhanced DM



UL Recognized
CSA Certified
VDE Approved

Introduction

The EK series are general purpose EMI filters with enhanced differential mode performance. They are effective in suppressing both common mode and differential mode noise. This series is a very good choice when it is required to comply with EMI emission regulations, such as FCC-A and VDE-A. Available in a wide range of current ratings and termination styles.

Minimum Insertion Loss in dB

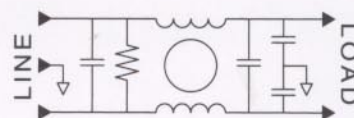
Common mode (line to ground) in 50 ohm system:

MODEL	Frequency in MHz								
	0.02	0.05	0.10	0.15	0.50	1.0	5.0	10	30
02EK11/33	7	15	21	24	35	43	45	45	40
03EK11/33/M1	8	16	22	26	37	45	45	45	40
06EK11/33/M1	4	11	16	20	31	40	45	45	40
10EK11/33/66/M1		2	5	9	20	25	38	42	40
20EK11/66		3	7	10	20	28	35	38	40
30EK66		4	8	12	23	30	35	38	40

Differential mode (line to line) in 50 ohm system:

MODEL	Frequency in MHz								
	0.05	0.10	0.15	0.50	1.0	3.0	5.0	10	30
02EK11/33	6	9	6	35	50	55	55	50	45
03EK11/33/M1	6	6	6	40	55	55	55	50	45
06EK11/33/M1	6	9	6	35	50	55	55	50	45
10EK11/33/66/M1	6	12	14	14	38	55	50	48	45
20EK11/66	6	12	14	14	38	55	50	48	45
30EK66	18	20	15	40	55	55	55	55	50

Schematic



Electrical ratings

Maximum operating voltage: 250 VAC

Operating frequency: 50/60 Hz

Hipot rating (one minute):

Line to Ground: 1500 VAC
Line to Line: 1450 VDC

Maximum leakage current (each line to ground):

@ 120 VAC / 60 Hz: 0.25 mA
@ 250 VAC / 50 Hz: 0.45 mA

Rated current at 40°C ambient temperature:

02EK11, 02EK33 2 A
03EK11, 03EK33, 03EKM1 3 A
06EK11, 06EK33, 06EKM1 6 A
10EK11, 10EK33, 10EK66, 10EKM1 10 A
20EK11, 20EK66 20 A
30EK66 30 A

Now in Stock at

EASTEK INTERNATIONAL CORPORATION

114 Joey Drive, Elk Grove, IL 60007, USA
Phone: 847 437 2800 Fax: 847 437 2809

or your local agent